



## Powdershape

the fast, easy and price performant analysis of particles  
4  $\mu\text{m}$  – 10  $\mu\text{m}$  in size and shape for quality inspection.

### All you need:

- Scanner
- Laptop
- Powdershape

### All you do :

- Prepare sample
- Scan image
- Print report



### All you get:

- Particle image
- Particle shape
- Particle size



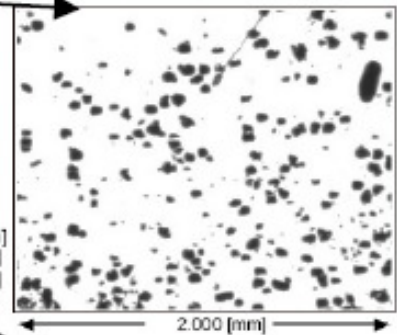
## REPORT grain size

Tested image : woka9010.jpg  
lotfile no : TEST  
Quality : Woka 9010  
Controller : HS  
Application : Powders  
Measuring Mask : 69 , rev. 0  
Particles 20-200  $\mu\text{m}$  4000dpi

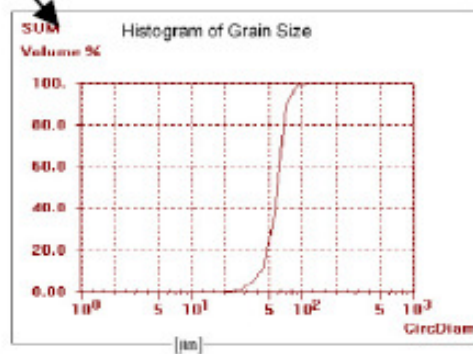
**Set-up Parameters & Limits**  
Resolution : 4000 [dpi]  
MinGrainSize : 20.000 [ $\mu\text{m}$ ]  
MaxGrainSize : 200.000 [ $\mu\text{m}$ ]

**Major Results from**  
Counted particles : 3014  
grain size : 50.06, s: 18.33 [ $\mu\text{m}$ ]  
Median grain size : 51.72 [ $\mu\text{m}$ ]

Measured objects image fraction [%] : 3.23  
All objects image fraction [%] : 25.60



Ellipticity : 1.3781, s: 0.2148  
Crystallinity : 1.0739, s: 0.0357  
Object area fraction [%] : 12.62



Percentile	
0.0	[%]
20.2663	[ $\mu\text{m}$ ]
5.0	[%]
39.7793	[ $\mu\text{m}$ ]
10.0	[%]
47.7356	[ $\mu\text{m}$ ]
50.0	[%]
66.7658	[ $\mu\text{m}$ ]
90.0	[%]
80.0912	[ $\mu\text{m}$ ]
95.0	[%]
85.2511	[ $\mu\text{m}$ ]
100.0	[%]
108.9017	[ $\mu\text{m}$ ]

powered by www.istag.ch Filters, Switzerland

Date : November152007

Signature :



엠 · 씨 · 아이 · 케이®  
MATERIAL CHARACTERIZATION  
INSTRUMENTS, KOREA

admin@rheology.co.kr

805

101 109

TEL : (02)3143-2740 / 1979

FAX : (02)3143-2753

http://www.mcik.com